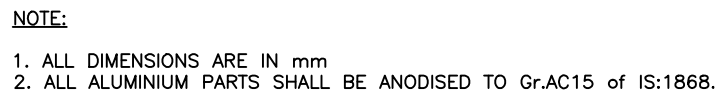


UNCONTROLLED

43	1	942-50236-1	WIRE SUPPORT			THK-2.5,SS304
42	2	942-50262	EARTHING BRACKET			THK-3,Alu5052
41	1	942-50225-1	BASE RH2	L-135		EXTRUSION REF, 942-50209
40	1	942-50035-17	FRAME BACK	L=490		EXTRUSION REF, 942-50203
39	52	RFS5960508	Hex.Soc head cap allen Bolt M5X8 to IS:2289/ Matl:IS-1367 (P-14) Gr-A2-70,Stainless steel			
38	48	RFS5960516	Hex.Soc head cap allen Bolt M5X16 to IS:2289/ Matl:IS-1367 (P-14) Gr-A2-70,Stainless steel			
37	200	RFW0920512	SPRING WASHER-B5 to IS:3063-(TAB-11)/MATL:AIISI-304,STAINLESS STEEL			
36	100	RFS5960512	Hex.Soc head cap allen Bolt M5X12 to IS:2289/ Matl:IS-1367 (P-14) Gr-A2-70,Stainless steel			
35	30	RFS7420512	Cross recessed CSK head screw MDX12 to IS:7485/ Matl:ISO-3506-79 Gr-A2-70,Stainless steel			
34	40	942-50231-1	NUT PAD-M5			THK-2.5,SS304
33	160	942-50230	NUT PAD-M5			THK-3,SS304
32	16	942-50310	L-ANGLE LH RH	L-25		EXTRUSION REF, 942-50210
31	8	942-50281	L-ANGLE LH RH	L-20		
30	2	942-50260	U-BRACKET			SM ,THK-3,ALU5052
29	1	942-50249	BACK PLATE LH			SM ,THK-3,SS304
28	1	942-50248	Z-PLATE-2 LH			SM ,THK-3,SS304
27	1	942-50247	Z-PLATE-1 LH			SM ,THK-3,SS304
26	52	942-50245	SUPPORT BRACKET ASSY,			SM THK-2,SS304 / CASTING
25	2	942-50244	BASE PLATE LH & RH			SM ,THK-5,ALU5052
24	4	942-50242	L-ANGLE LH & RH			EXTRUSION REF 942-50210-1
23	4	942-50240	END CAP PLATE-2LH&RH			SM ,THK-3,ALU5052
22	4	942-50239	END CAP PLATE-1LH&RH			SM ,THK-3,ALU5052
21	4	942-50236	WIRE SUPPORT			SM ,THK-15,ALU5052
20	1	942-50229	L-ANGLE LH	L-25		
19	1	942-50228	L-ANGLE RH	L-25		EXTRUSION REF, 942-50210
18	1	942-50226	BASE LH	L-420		EXTRUSION REF, 942-50209
17	1	942-50225	BASE RH1	L-165		
16	1	942-50035-16	FRAME	L=499.5		EXTRUSION REF, 942-50207
15	3	942-50035-15	FRAME	L=499.5		EXTRUSION REF, 942-50205
14	2	942-50036-14	FRAME	L=499.5		EXTRUSION REF, 942-50204
13	1	942-50035-13	FRAME LH	L=270		EXTRUSION REF, 942-50206
12	1	942-50035-12	FRAME RH-2	L=90		
11	1	942-50035-11	FRAME RH-1	L=60		
10	1	942-50219	FRAME LH TOP	L=534		EXTRUSION REF, 942-50203
9	5	942-50035-9	FRAME FRONT & BACK	L=534		
8	1	942-50035-8	FRAME FRONT	L=490		
7	6	942-50035-7	FRAME LH & RH	L=270		
6	4	942-50259	BRACKET ASSY,			SM ALU5052
5	2	942-50035-5	FRAME	L=152		EXTRUSION REF, 942-50202
4	1	942-50258	FRAME-RH	L-1345		
3	1	942-50257	FRAME-LH	L-1345		
2	2	942-50256	FRAME-RH	L-320		
1	2	942-50255	FRAME-LH	L-320		
SL.No	QTY	PART / STOCK No.	DESCRIPTION	SIZE	COMPANY STD./IS	Wt. (Kg)
						MATERIAL
PRODUCT BMRCL METRO CARS						
REF. DRG. NO. 99509NEED						
MATERIAL						
HEAT TREAT						
CORRUPE						
TITLE						
REVISED & REDRAWN						
ECN:92610057						
21.03.18						
REVISED & REDRAWN						
ECN:92610027						
10.02.18						
REVISED & REDRAWN						
ECN:92610027						
10.02.18						
REVISED & REDRAWN						
ECN:92610027						
10.02.18						
REVISED & REDRAWN						
ECN:92610027						
10.02.18						
REVISED & REDRAWN						
ECN:92610027						
10.02.18						
REVISED & REDRAWN						
ECN:92610027						
10.02.18						
REVISED & REDRAWN						
ECN:92610027						
10.02.18						
REVISED & REDRAWN						
ECN:92610027						
10.02.18						
REVISED & REDRAWN						
ECN:92610027						
10.02.18						
REVISED & REDRAWN						
ECN:92610027						
10.02.18						
REVISED & REDRAWN						
ECN:92610027						
10.02.18						
REVISED & REDRAWN						
ECN:92610027						
10.02.18						
REVISED & REDRAWN						
ECN:92610027						
10.02.18						
REVISED & REDRAWN						
ECN:92610027						
10.02.18						
REVISED & REDRAWN						
ECN:92610027						
10.02.18						
REVISED & REDRAWN						
ECN:92610027						
10.02.18						
REVISED & REDRAWN						
ECN:92610027						
10.02.18						
REVISED & REDRAWN						
ECN:92610027						
10.02.18						
REVISED & REDRAWN						
ECN:92610027						
10.02.18						
REVISED & REDRAWN						
ECN:92610027						
10.02.18						
REVISED & REDRAWN						
ECN:92610027						
10.02.18						
REVISED & REDRAWN						
ECN:92610027						
10.02.18						
REVISED & REDRAWN						
ECN:92610027						
10.02.18						
REVISED & REDRAWN						
ECN:92610027						
10.02.18						
REVISED & REDRAWN						
ECN:92610027						
10.02.18						
REVISED & REDRAWN						
ECN:92610027						
10.02.18						
REVISED & REDRAWN						
ECN:92610027						
10.02.18						
REVISED & REDRAWN						
ECN:92610027						
10.02.18						
REVISED & REDRAWN						
ECN:92610027						
10.02.18						
REVISED & REDRAWN						
ECN:92610027						
10.02.18						
REVISED & REDRAWN						
ECN:92610027						
10.02.18						
REVISED & REDRAWN						
ECN:92610027						
10.02.18						
REVISED & REDRAWN						
ECN:92610027						
10.02.18						
REVISED & REDRAWN						
ECN:92610027						
10.02.18						
REVISED & REDRAWN						
ECN:92610027						
10.02.18						
REVISED & REDRAWN						
ECN:92610027						
10.02.18						
REVISED & REDRAWN						
ECN:92610027						
10.02.18						
REVISED & REDRAWN						
ECN:92610027						
10.02.18						
REVISED & REDRAWN						
ECN:92610027						
10.02.18						
REVISED & REDRAWN						
ECN:92610027						
10.02.18						
REVISED & REDRAWN						
ECN:92610027						
10.02.18						
REVISED & REDRAWN						
ECN:92610027						
10.02.18						
REVISED & REDRAWN						
ECN:92610027						
10.02.18						
REVISED & REDRAWN						
ECN:92610027						
10.02.18						
REVISED & REDRAWN						
ECN:92610027						
10.02.18						
REVISED & REDRAWN						
ECN:92610027						
10.02.18						
REVISED & REDRAWN						
ECN:92610027						
10.02.18						
REVISED & REDRAWN						
ECN:92610027						
10.02.18						
REVISED & REDRAWN						
ECN:92610027						
10.02.18						
REVISED & REDRAWN						
ECN:92610027						
10.02.18						
REVISED & REDRAWN						
ECN:92610027						
10.02.18						
REVISED & REDRAWN						
ECN:92610027						
10.02.18						
REVISED & REDRAWN						
ECN:92610027						
10.02.18						
REVISED & REDRAWN						
ECN:92610027						
10.02.18						
REVISED & REDRAWN						
ECN:92610027						
10.02.18						
REVISED & REDRAWN						
ECN:92610027						
10.02.18						
REVISED & REDRAWN						
ECN:92610027						
10.02.18						
REVISED & REDRAWN						
ECN:92610027						
10.02.18						
REVISED & REDRAWN						
ECN:92610027						
10.02.18						
REVISED & REDRAWN						
ECN:92610027						
10.02.18						
REVISED & REDRAWN						
ECN:92610027						
10.02.18						
REVISED & REDRAWN						
ECN:92610027						
10.02.18						
REVISED &						